

Haicom HI-604 GPS Tracking Device with 5-years Standby Battery

INTRODUCTIONS:

This is a multi-function state-of-the-art GPS tracking solution offering you a 4 in 1 solution GPS/GSM/GPRS/SMS/DTMF all in real time - the most flexible tracking device in the world - a great marriage of the latest technology and affordability.

With **HI-604** multi function tracker, one can track, remote control, tapping any object globally in real time on the map. User can check the real time location from the GPRS tracking web site or using the Haicom Tracking software installed on the PC and check the real time position on the map via the regular dial tone transmission.

HI-604 tracking Device is the best tracking solution for use in the widest range of applications, from motor homes to mobile home, from cars to caravans, from agricultural machinery to construction equipment, from containers to golf carts – all the assets that you feel could be at risk, especially if they do not have their own source of power.

Just place the tracker where there is no metal material on above, user can see his valuable anytime, anywhere from any computer. The waterproof case allows the tracker still functioning even though under tough and harsh environment. The build in big battery provide the independent power supply even if there is no external power supply. The moving sensor will let the tracker totally switch off (only the microchip standby: 10 mAh) and the tracker can operate very long, could be years, if there is not much movements. With the moving sensor, the tracker will not drain the car battery when the tracker connected to external battery power.

Features

Haicom Asset Tracking Solution offers you a lot of advantages

- Our GPRS tracking software Platform and server is free; if you have your own server we can program our tracker with your server protocol
 - Worldwide coverage with NO additional programs to buy or install - no additional or hidden costs!
 - Built-in moving sensor with deep sleeping mode (0.1mA)
 - Built in 5,500 mAh battery for independent power
 - Stand-by time up to 5 yrs (depending on tracking needs)
 - High sensitivity GPS fixed
 - Multi-ways tracking software plate form available
 - Waterproof case for harsh condition environment
 - Customizations for different tracking applications
 - Comes with strong Magnetic mounting for easy attachment
 - Stand alone (Internal Antenna - Self Contained Unit)
 - User can switch the DTMF mode or GPRS
 - Worldwide coverage using GSM/GPRS/SMS/DTMF
 - allow you to monitor both on demand or at regular intervals
 - Ultra low power GPS.
 - All-in-one design.
 - Provides you 24/7 access to the location of all your assets.
 - 100% free DTMF live tracking with or with out internet
 - LIVE real-time tracking, configurable from every 30 second to 72hour GPRS updates!
-
- Give complete supervision into your operations by seeing how long assets are sitting around in one place, when they start moving / stop moving etc.
 - Establish how long the assets are being used (actual operations time).
 - Warns when unauthorised/unwanted movement happens.
 - Provides security and accountability.
 - Enables the recovery of any stolen assets.
 - View asset's history online from any computer

Applications

- Police Force and law enforcement Sector
- Private Investigations Sector
- GPS Asset Tracking
- GPS Cargo Tracking
- Surveillance Work
- Anti theft – both domestic and commercial
- Asset recovery

How The HI-604 GPS Tracker Works:

Once fully charged, the HI-604 battery can last up to 5 years, depending on usage, it has a built-in movement sensor that can be configured directly to alert you on your mobile phone and our server automatically when the object is moved or touched. The owner can locate the asset at any time using our DTMF solution. The HI-604 unit can also be programmed to automatically report its position at regular pre-set time intervals, which could be from every 30 seconds to every 72 hours.

Getting Started:

1. Take out the waterproof side rubber seal and connect the 18 pin cable to HI-604 and plug another end to the USB port from computer or to the AC power outlet with the AC adaptor for power charging.



2. Place the SIM card on the SIM card tray and slid in the SIM card tray in. When the SIM card tray inserted in place, the HI-604 power will switch on.



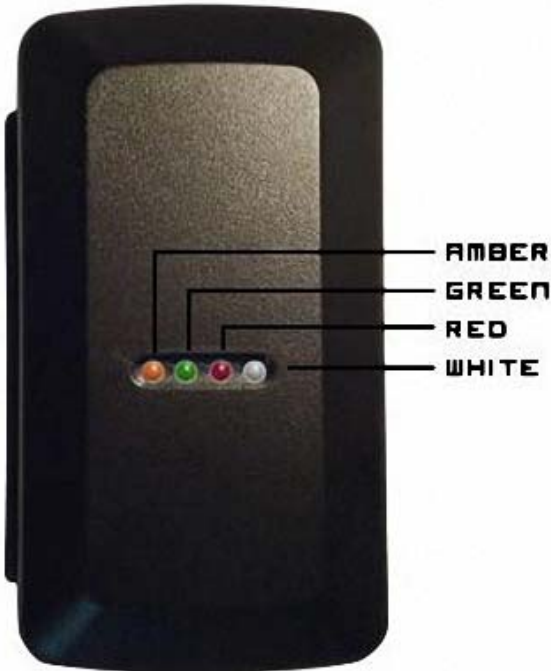
3. To switch off HI-604 power, simply push in the yellow dot with any pen.



Dimension:



LED Indicator:



LED Color	LED	Status
Amber	On Off	Charging Charge Completed
Green	flashing Stay on Off	GPS in 3D fixed GPS not 3D fixed yet GPS in sleeping mode
Red	On	Battery low
White	64 ms ON/3S OFF 64 ms ON/0.8S OFF	GSM stand-by Searching GSM network or no SIM

Standard Packing:

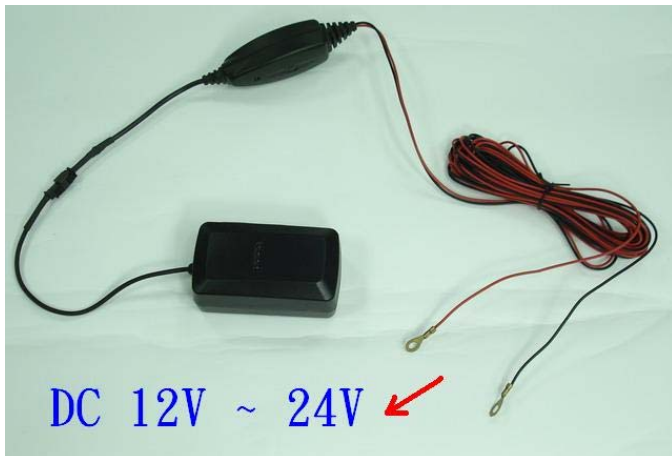
1. HI-604 main unit
2. 18 pin to USB cable
3. AC power adaptor
4. mini CD
5. User manual



Connect HI-604 to vehicle battery:

With the optional car battery cable (5 meter in length), user can also connect HI-604 to the vehicle battery for permanent power supply.

Car battery cable:



The car battery cable can be connected directly to the vehicle battery (12V or 24V) and transfer into 5V for the HI-604. Very important: don't connect HI-604 pintail cable directly to the vehicle battery because the pintail cable takes only 5V.



GPRS Tracking:

Set up the APN, IP and Port:

☆ Before the set up, please install the USB driver first. The USB driver is inside the inclusive small CD.

1. Connect HI-604 to computer USB port



2. Run the APN set up program (inside the inclusive small CD) and open the 602V090703C folder

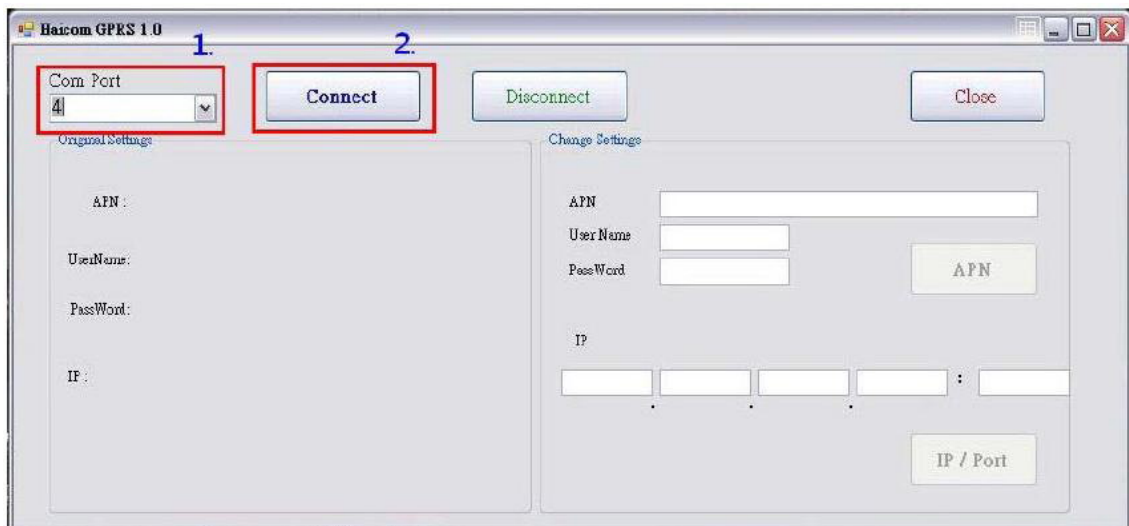
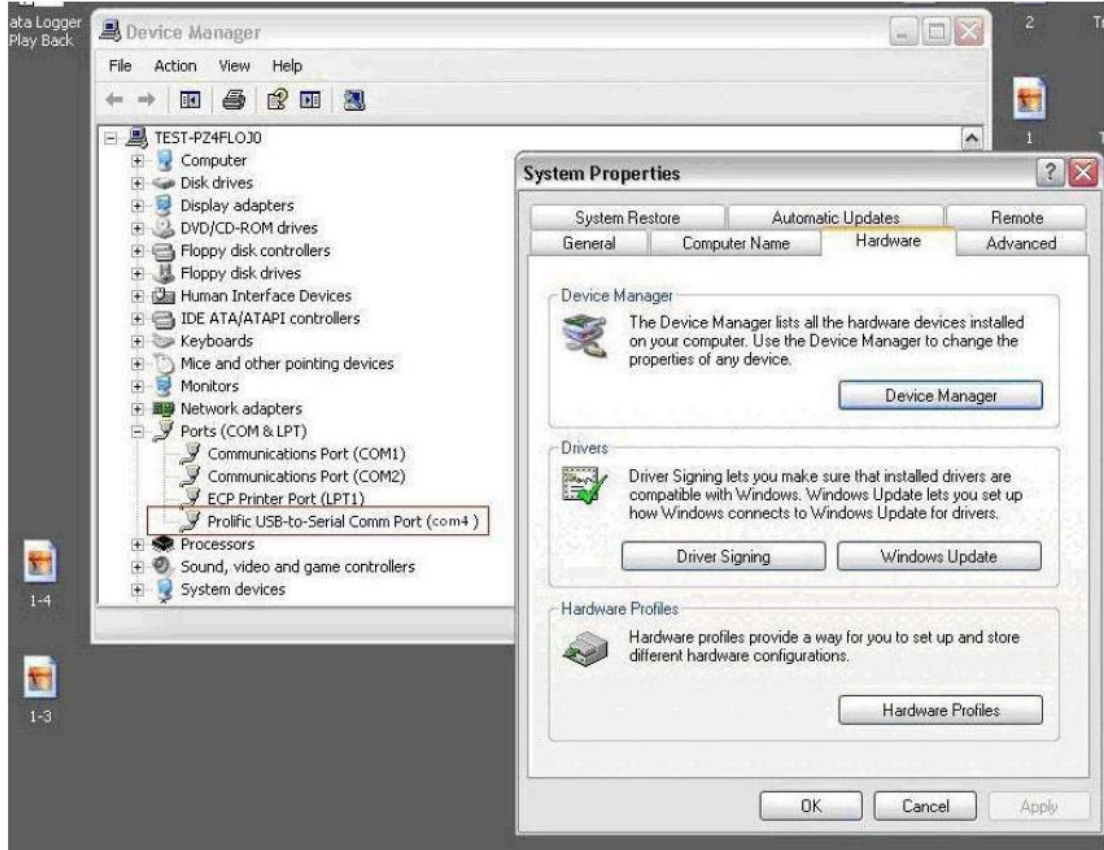


3. Select the USB com port

Click “ Connect “

Push the SIM card tray in place to power on the HI-604

(Very Important: before this step, the SIM card tray can not push in place)



4. Key in the SIM card APN - Access Point Name

(Please consult your local telecomm service provider if you don't know the exact APN)

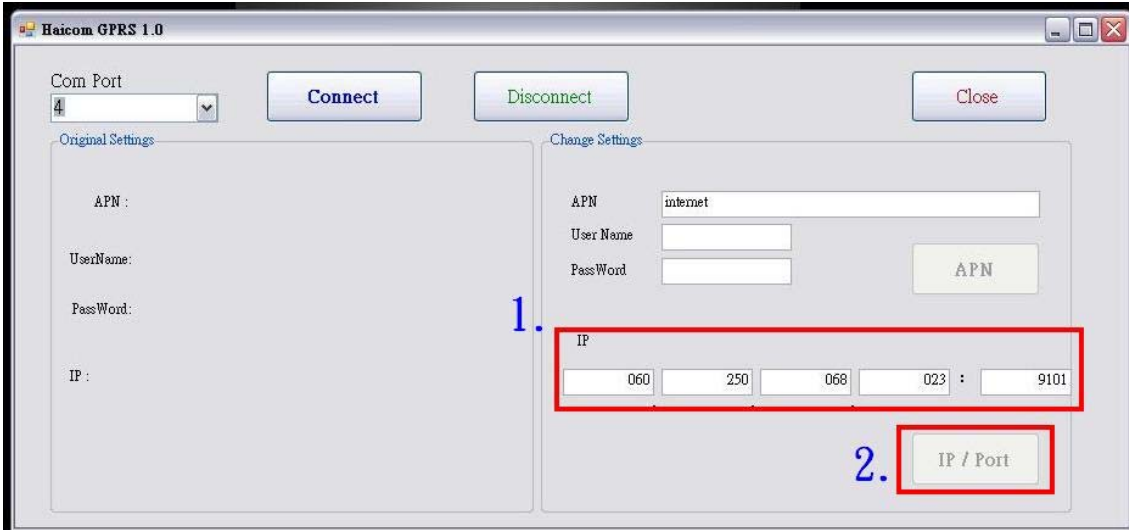
Click the red APN icon to set up



5. Key in the IP and Port

(Every IP colume must with 3 digits. If your IP address only come with 2 digits, please fill in " 0 " in front of the 2 digits and the Port must with 4 digits)

Click the red IP/Port icon to set up



5. Switch HI-604 off and on (by push out and push in the SIM card tray) to change the set up.

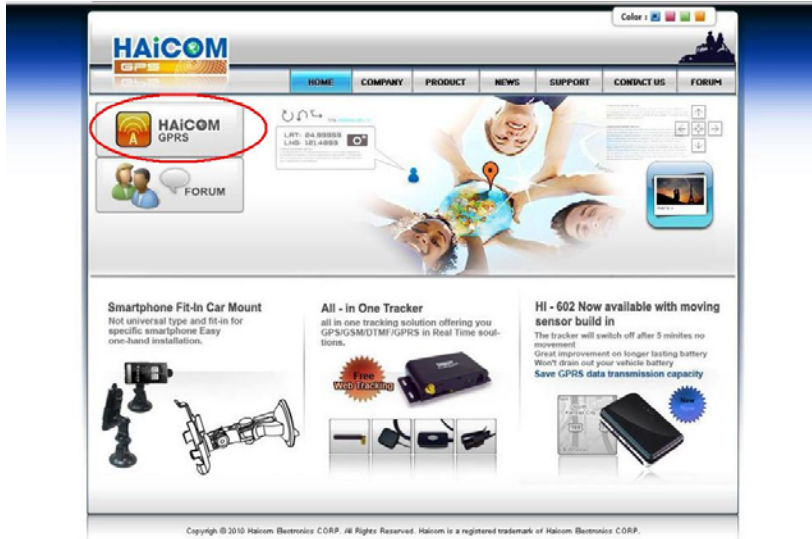
☆ The HI-604 default setting is come with TCP mode. If your GPRS server come with UDP mode, please change the setting to UDP mode by using the dial tone command setting:

1. Call the tracker phone number and hear the continue dial tone
2. Press # and the dial tone stopped
3. Press 0000 (default pass code) and hear a " B "
4. Press 380# and hang up the phone to complete the set up

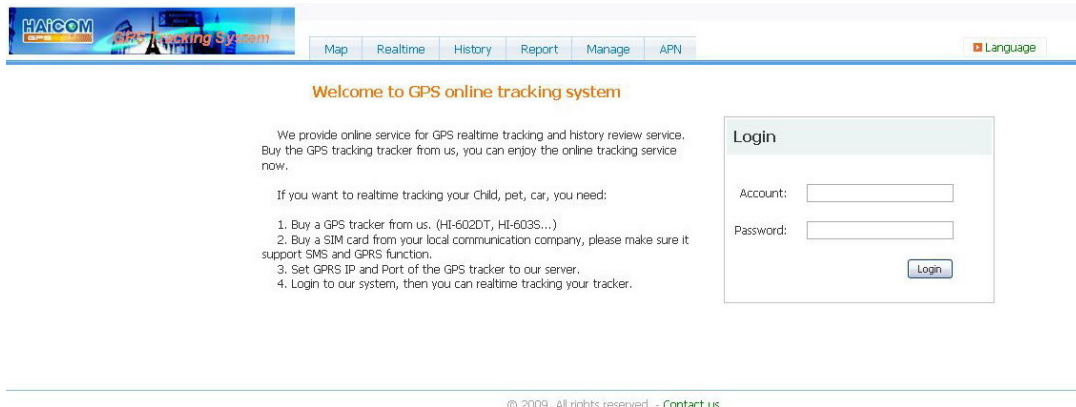
GPRS tracking from Haicom web site:

After setting up the SIM card APN, user can fill in Haicom IP and Port (060 250 068 023 9101) to track from Haicom web site.

1. Enter Haicom home page : <http://www.haicom.com.tw>
2. Click the “ Haicom GPRS “ icon



3. Hyper link to Haicom GPRS page



4. On HI-604 unit, you will find the code starting with HIXXXXXXX the account and the password is the same.

Account : HIXXXXXXX

Password :HIXXXXXXX



5. After login, select the “Manage” for Modify Password

Welcome to GPS online tracking system

We provide online service for GPS realtime tracking and history review service. Buy the GPS tracking tracker from us, you can enjoy the online tracking service now.

If you want to realtime tracking your Child, pet, car, you need:

1. Buy a GPS tracker from us. (HI-602DT, HI-603S...)
2. Buy a SIM card from your local communication company, please make sure it support SMS and GPRS function.
3. Set GPRS IP and Port of the GPS tracker to our server.
4. Login to our system, then you can realtime tracking your tracker.

© 2009, All rights reserved. - [Contact us](#)

Manage

Tracker Config

Modify Password

User Account

Email Setting

Add New Tracker Total 5 devices permission

Name	Model	Tracker ID	Operation

© 2009, All rights reserved. - [Contact us](#)

6. On Realtime page, Select “Ass New”

Welcome, HI9999999

Select GPS tracker: (Add New)

Geo-Fence Speed Alarm Update Position Report Interval Stop Engine

ID:
Time:
Signal:
Orient:
Address:

Lng:
Speed:
State:

Output:

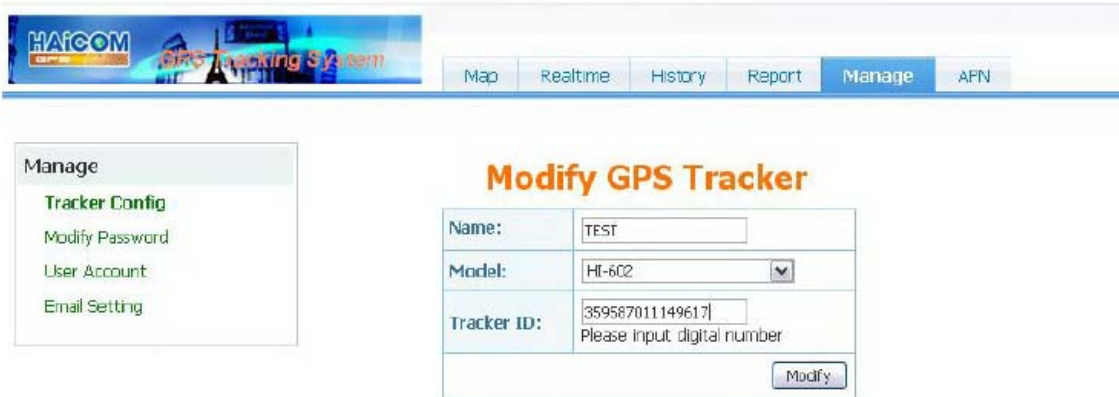
Information:
Report Position Move direction No signal Alarm

© 2009, All rights reserved. - [Contact us](#)

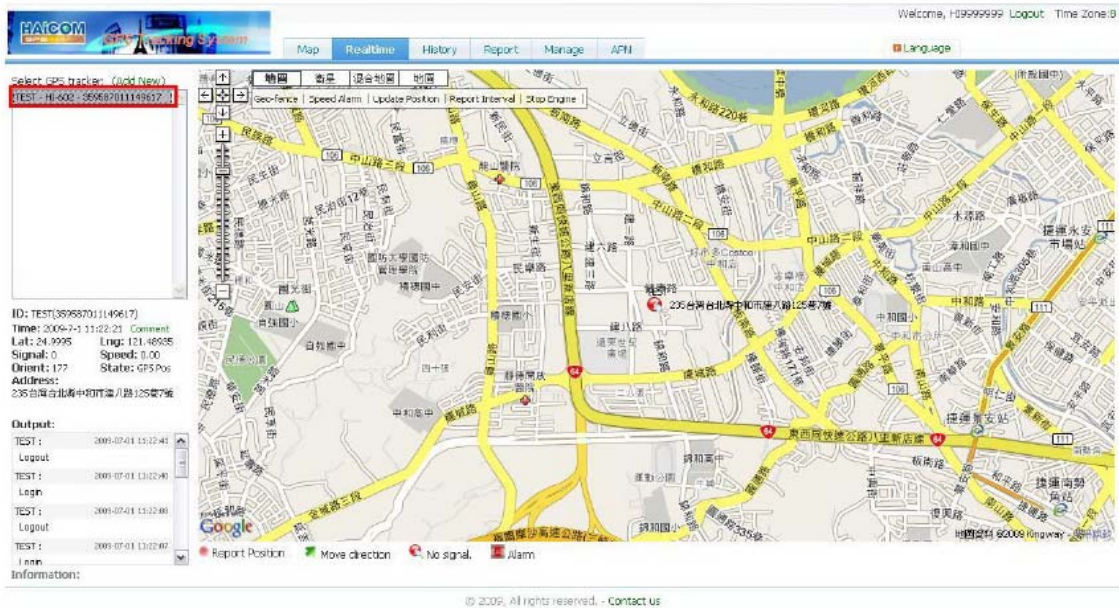
7.The tracker name is what you want to call your tracker The tracker ID is the IMEI number on the tracker Click on “ Realtime “ you will see your real time location

Click on modify password to change the password if you wish to change the password

Click the User account to change the time zone



8.Completed the set up



HI-604 dial tone command list

# Pass	* Pass
0 new new # (change PIN)	*64#*590 (reset all command settings)
1 (temporary disable tracking encrypted)	0 new new * (change pass code)
SMS send back 21 (to 1st set) 22 (to 2nd set) 23 (to 3rd set)	5 (enable alarm function immediately)
2# (Cancel SMS) 2* (Activate SMS) default	9 (back to tracking mode)
51 (Disable moving sensor) default 52 (moving sensor stand by)	Set up dial back telephone numbers 1xxxxxxxxxxxxx* (1st set, for alarm trigger) 2xxxxxxxxxxxxx* (2nd set, for alarm trigger) 3xxxxxxxxxxxxx* (3rd set, for alarm trigger) 7xxxxxxxxxxxxx* (7th set, for SMS multi - sending) 80602500680239101* (GPRS IP set)
54 (Bugging without pass code) default 55 (Pass code required for bugging)	
57 (Tracking without pass code) default 58 (pass code required for tracking)	
6* (dial back after GPS fixed) 6# (dial back when over 20km)	
64 (Power off warning dial back) default 65 (disable power off warning)	
380# (Activate GPRS UDP port) 381# (Activate GPRS TCP port) default 300# (Disable GPRS)	
63 (Active & set up Geofencing) 61 (remote active) 60 (remote disable)	63050# (050 x 18 = 900m) Range: 001~255
20 (auto SMS continue send back)	20101 20 initial command 1 ~ 9 (every X minite) 01 ~ 98 (send XX times) 99 continue none stop 00 rest
67 (Sounded when press SOS button) default 68 (Silent when Press SOS button)	
3* (Disable GPS power saving) 3# (Active GPS power saving) default 39 (Active GPS and GSM power saving) 7 (GPS sleep immediately) 9 (GPS full power immediately)	
33 (GPRS sending interval)	3300015# (00015 x 4 = 60 second) Range: 00001~65535
3* (Disable GPS power saving) 3# (Active GPS power saving) default 39 (Active GPS and GSM power saving) 7 (GPS sleep immediately) 9 (GPS full power immediately)	
Dial back test 71 (to 1st, 2nd, 3rd) 77 (SMS to 1st, 2nd, 3rd)	